



JULY

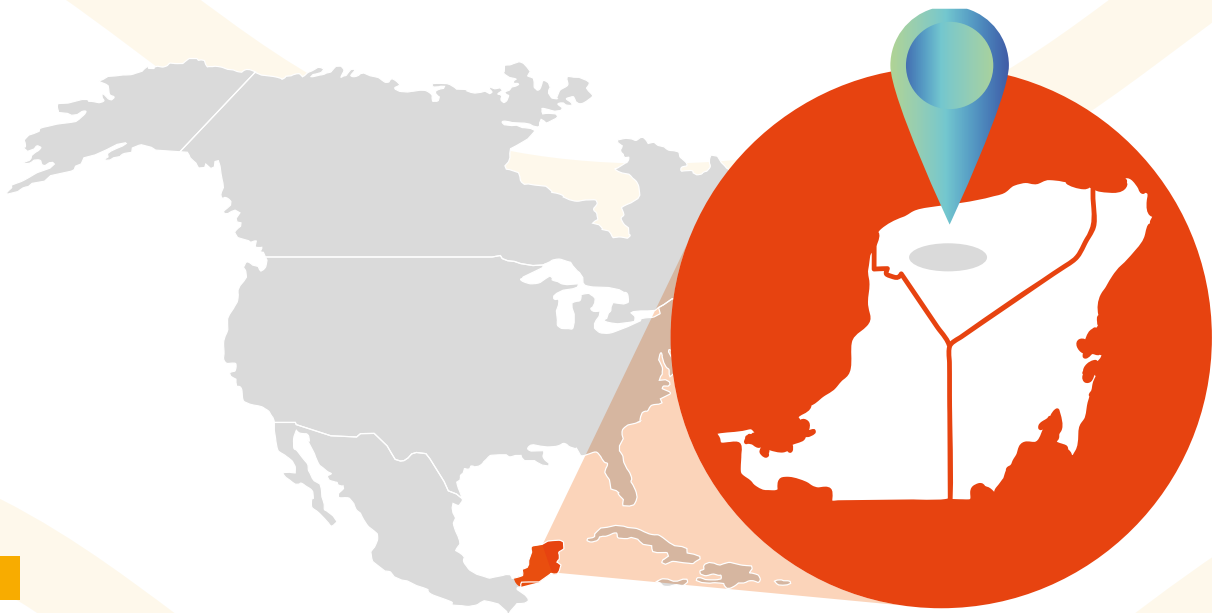
7 - 12

ANÁHUAC MÉRIDA

SUSTAINABILITY and INNOVATION in YU@TÁN

International Bootcamp





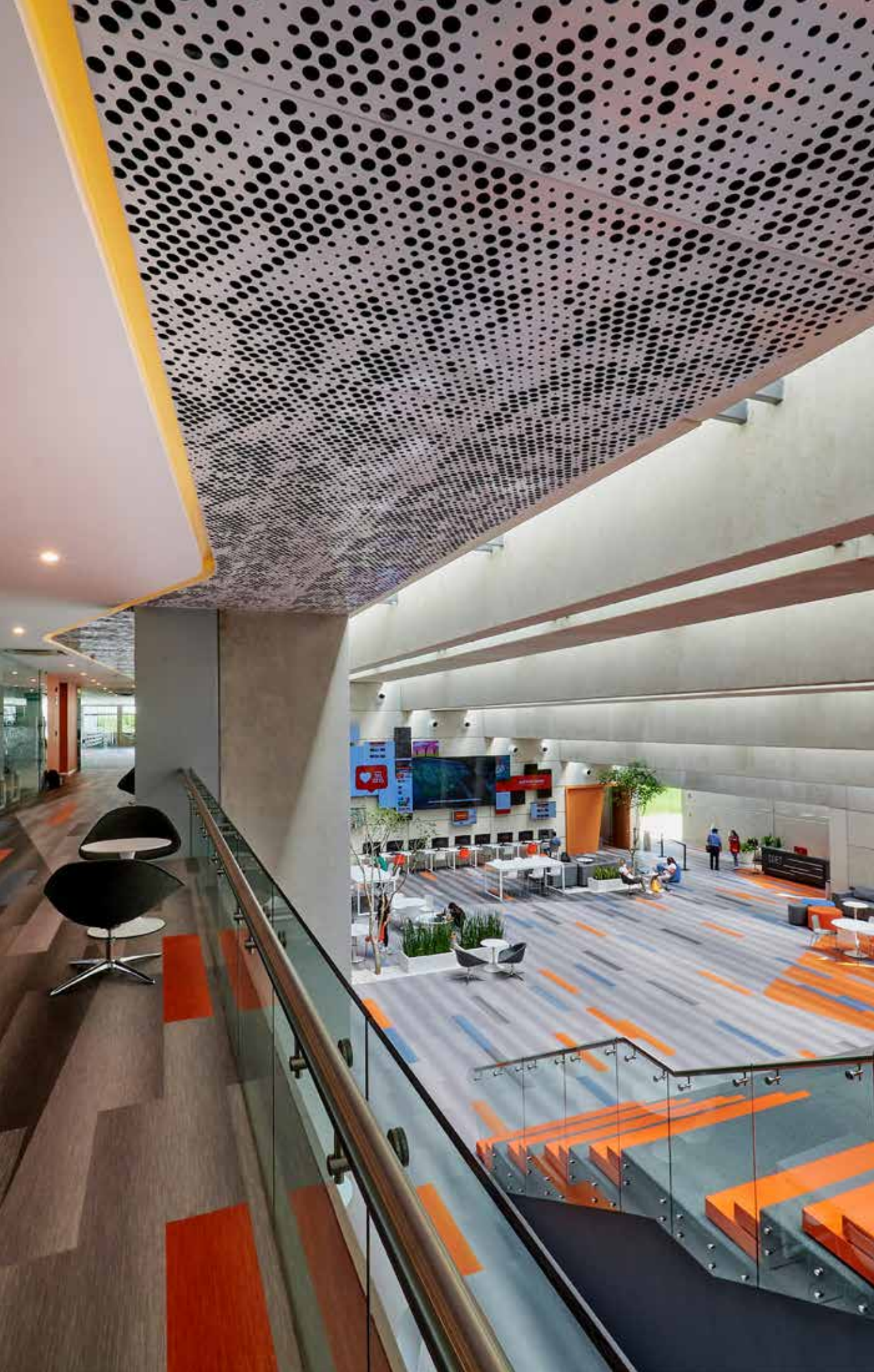
Why Merida, Yucatan?

Yucatan, located in the southeast of Mexico, is considered one of the safest regions in the country. It outstands for its lifestyle, cultural flamboyance and excellent infrastructure in medical and educational services.

Merida, the capital of the state of Yucatan, is leader in Higher Education in the southeast region of the country. This colonial city with with a strong Mayan cultural heritage has been named among the top places in the world to visit and the American Capital of Culture in 2000 and 2017.

The city is recognized for its calm and quiet lifestyle, bustling neighborhoods, rich cultural heritage and pollution-free environment. Merida is surrounded by many spectacular attractions both natural and cultural; from the beautiful beaches of the relaxed town of Progreso, to the world famous Mayan ruins of Uxmal, Mayapan and Chichen Itza. The options to discover great places near the capital are numerous.





“PERFECT PLACE TO STUDY”



Why Anahuac Mayab?

This will be the most exciting journey that you will experience in terms of discovering new technologies, global innovation business trends and sustainable models, learning from real life scenarios. Surrounded by a diverse and international academic environment, with a transformative learning focus and enjoying Merida's cultural and gastronomic offering in the full swing of summer you will be able to deepen your cross-industry insights and become inspired to lead innovatively and drive change. Lecturers are experts in their chosen fields and are committed to teaching with academic excellence. Our faculty are actively involved in academic research, and many advise international-leading companies and Government agencies.



"The experience was incredible, the difference with the culture of Europe is something that can enrich you. Merida is very pretty and safe. At the University you can get involved in many interesting activities."

Ettore Simone Tortora.

Università degli studi di Milano-Bicocca, Italy.
Management & Finance.



"This exchange allowed me to open myself to different cultures, beside the European and French culture. I have improved my level of Spanish, which was one of the most important goals."

Pauline Camus.

EDHEC Business School, France.
International Business.

Aimed at university students interested in sustainability, innovation, engineering, business, environmental sciences, architecture, tourism, and regional development.



Objective:

To train students in principles of sustainability and innovation by focusing on the unique resources and challenges of the Yucatán region. Over the course of a week, students will explore ways to integrate traditional practices, local knowledge, and modern technologies to design innovative solutions in key areas such as water management, renewable energy, sustainable agriculture, and responsible tourism.



COURSE MODULES

1.★ • Sustainability and Yucatán Resources

2.★ • Key ecosystems in the region: jungle, mangroves, cenotes

3.★ • Renewable Energy and Local Energy Solutions

4.★ • Sustainable Agriculture and Natural Resource Management

5.★ • Water Management and Conservation

6.★ • Sustainable Tourism and Local Culture





“PERFECT PLACE TO STUDY”

IMPORTANT INFORMATION

SUMMER SCHOOL DATES

From July 7th to the 12th

MXN\$10,500

Registration deadline: May 15th

Payment deadline: May 31st

WHAT IT'S INCLUDED?

- Tuition for the course (includes a transcript)
- Welcome Ceremony
- Anahuac Merida Welcome Kit
- School bus to and from the University
- Coffee break & lunch at the University
- Day Trip to an archaeological zone
- Field trips
- Closing Ceremony and Diploma

CONTACT OUR TEAM

anahuacmid.mx/summer-school

Contact information:

gema.garcialujan@anahuac.mx
international@anahuac.mx

Universidad Anahuac Merida
Carretera Merida-Progreso Km. 15.5 Int. Km. 2 carretera a Chablekal.
C.P. 97308 Merida, Yucatán, México.



PERFECT PLACE TO STUDY